

CBA 1: 'A Person of Committment'

Possible ways of selecting a person of commitment

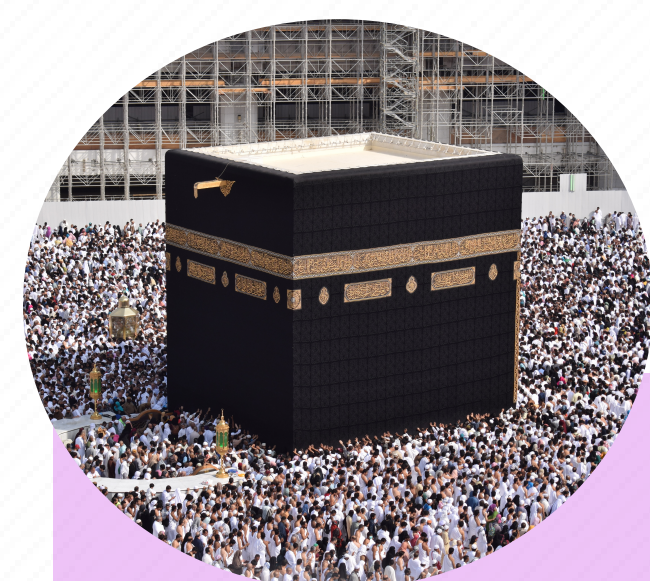


Note that the list of possible ways of selecting a person for the focus of this CBA suggested below is not meant to be exhaustive. Considerable variation in the persons selected for exploration by students is to be expected. Teacher professional judgment and guidance for students is important in helping students identify persons of commitment who are compatible with the aims of this CBA and clearly align with the learning outcomes in the RE specification.

- This CBA is designed to facilitate students in undertaking an investigation into a person of personal interest to them who has made a positive impact on the world with a particular focus on exploring the values, worldview and/or belief that have influenced the person.
- It invites students to consider the role that positive values and beliefs can play in a person's life and to examine how people live out of their beliefs.

- Students have autonomy in selecting a person for their study. There are no parameters or restrictions in terms of place or time when s/he lived.
- The suitability of the person chosen can be judged in terms of whether the person's actions or ideas made a positive contribution to the world and can demonstrate a link between faith/belief/worldview and their actions.
- The chosen person should be agreed in consultation with the teacher, who will be able to advise on the appropriateness for research of the person selected, in the context of the aim of junior cycle Religious Education.

Each student or group of students will identify one person. In general, subjects chosen may range from a person living today to a person living in the past, and from a person who is well known to a person who may not be well known.



A person known to the student who is living a life of commitment and making a positive difference in the world at a local, national or international level.



The founder or member of an organisation or of a community committed to helping others.



A religious leader or world leader who has made a positive impact on the world.



A person of faith associated with one of the five major religions studied in the specification or belonging to another major world religion.



A person who does not associate him/herself with any religion yet demonstrates commitment to a worldview and values that have impacted positively on the world at a local, national or international level..



Students may choose to report in a variety of formats –

Written

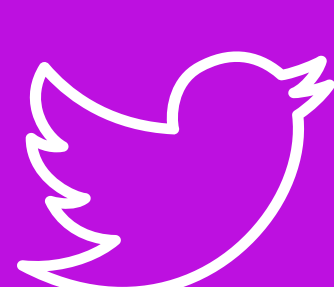
essay
letter
obituary

Audio, Performance or Multi-modal

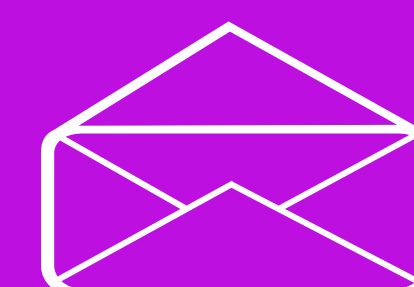
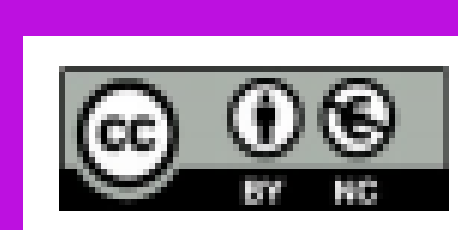
script for a broadcast
speech, interview
oral presentation, blog,

Students may wish to start considering possible people and formats for the CBA shortly before the three week period of work on the assessment begins.

Note that in this CBA students are asked to research and report on a person whose religious beliefs or worldview have had a positive impact on the world around them, past or present. Research implies finding information on their chosen person; sorting, recording, analysing the information and drawing conclusions. Report implies presenting a written, visual or oral account.



@jct_re



info@jct.ie