

Thank you everyone for all your support throughout 2020- 2021. Stay safe and we look forward to seeing you all again in person very soon.

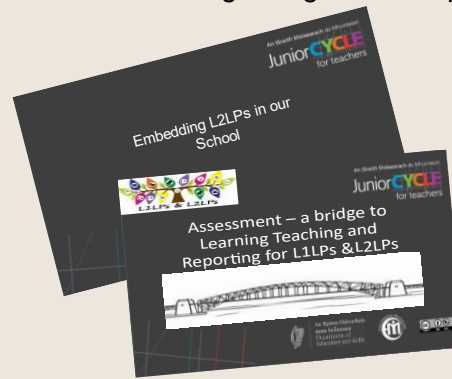
thank you



To see how to express "Thank you" using Irish Sign Language click [here](#).

To learn other daily expressions, click [here](#)

Thank you to all the schools we met on our Mainstream and Special School visits over our Zoom platforms during 2020/2021 school year. We will be in touch with schools in the Autumn regarding our CPD plan for the 2021/2022 school year.



### Mainstream School CPD 2020/2021

All workshops are available here [CPD Workshops](#)

### Special School CPD options 2020/2021

All workshops are available here [CPD Workshops](#)

Tá acmhainní nua curtha ar ár suíomh faoi 'Acmhainní Punainne'. Cliceáil ar na híomhánna thíos chun breathnú.



All Schools can now complete a Certificate of Achievement for students who completed their Junior Cycle in 2020. All details can be found at this link. Deadline June 18<sup>th</sup>

[Junior Cycle Certificate of Achievement 2020](#)

### Frequently Asked Questions Junior Cycle Certificate of Completion 2020

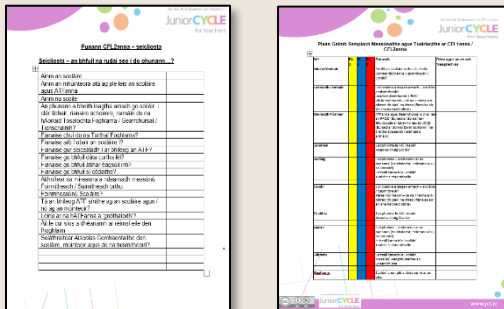
#### EPDQ Schools

- Q. Do I have to resubmit my Logs, Principal Signature and Year head Signature if I submitted them last year?
- A. No, the Certificate of Completion 2020 which will replace the JCPA for the Junior Cycle class 2019/20 following the cancellation of the State examinations will not include the school logs, principal and/or year head signatures on this occasion.
- Q. I cannot find a Certificate of Completion for downloading on ESINET for one of my students, what do I do?

A huge thank you to our wonderful team of Associates and their schools. Your continued work and engagement with Junior Cycle for Teachers makes such a difference. A special thank you to those who will not be returning as Associates next year. We hope you have a nice restful time this summer



Oidhreacht		Gaeilge		Ealaíon		Máthemetice		Eolaíocht		Iomparáil		Gairneoireacht	
1	2	3	4	5	6	7	8	9	10	11	12	13	14
15	16	17	18	19	20	21	22	23	24	25	26	27	28
29	30	31	32	33	34	35	36	37	38	39	40	41	42



For all up-to-date information on workshops, webinars, planning, assessment, and resources for both L1LPs/L2LPs, please visit [www.jct.ie](http://www.jct.ie) or click on images below:



An expanded summer programme of provision for pupils with complex special educational needs and those at risk of educational disadvantage was announced on May 11<sup>th</sup>, 2021.

For more information click on image below:



As part of the range of supports available to schools regarding the Level 1 Learning Programmes (L1LPs) and the Level 2 Learning Programmes (L2LPs), we have designed some self-directed CPD modules on Implementation and Working Collaboratively.

Click on images below.



We are here to help, please contact any of us via email with any enquiries or questions you may have.

[fiona. Kearney@jct.ie](mailto:fiona. Kearney@jct.ie) Advisor

[micheal. scully@jct.ie](mailto:micheal. scully@jct.ie) Advisor

[cathal. osuilleabhain@jct.ie](mailto:cathal. osuilleabhain@jct.ie) Advisor